

## ***Technical Information FP 007***

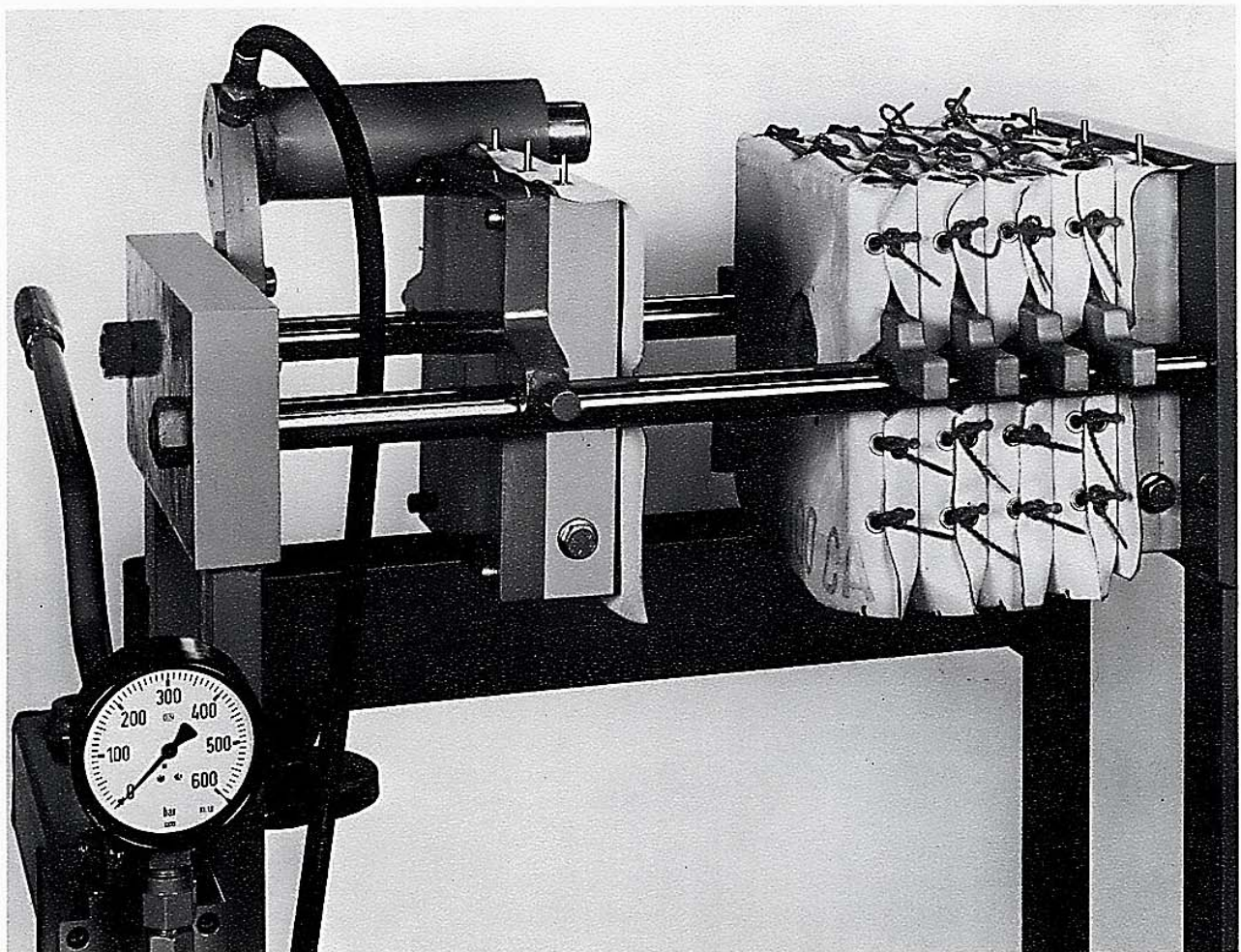
**Chamber Filter Presses**

**250 x 250 mm 021.03**

**threaded spindle**

**250 x 250 mm 021.04**

**hydraulic closure with hand pump**

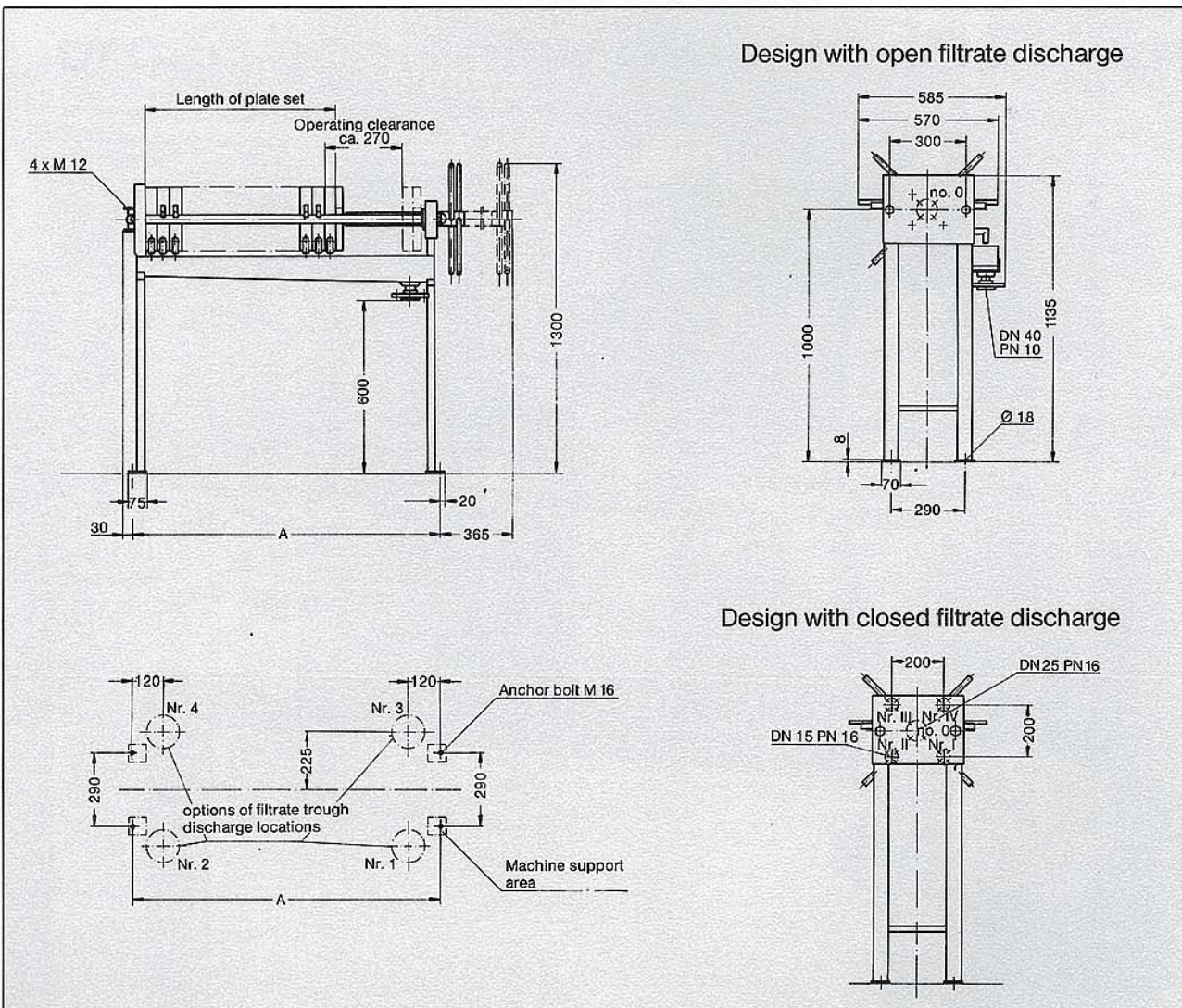


# Technical Data

250 x 250 mm  
Threaded spindle

Size of press		250/5				250/10				250/15				250/20				
Cake thickness	mm	15	20	25	30	15	20	25	30	15	20	25	30	15	20	25	30	
Max. amount of chambers	amount	7	6	5	5	13	11	10	9	19	17	15	14	26	23	20	18	
Filter-area	open filtrate discharge	dm <sup>2</sup>	62	58	52	55	114	106	104	99	167	163	156	154	229	221	208	198
	closed filtrate discharge	dm <sup>2</sup>	48	46	41	45	88	84	82	81	129	129	123	126	177	175	164	162
Filter Volume	open filtrate discharge	dm <sup>3</sup>	4,9	5,4	5,5	7	9,1	9,9	11	9,8	13,3	15,3	16,5	19,6	18,2	20,7	22	25,2
	closed filtrate discharge	dm <sup>3</sup>	3,5	4,2	4,5	5,5	6,5	7,7	9	9,9	9,5	11,9	13,5	15,4	13	16,1	18	19,8
Weight of empty press	kg	140				160				180				200				
Length of plate set	mm	280				515				750				985				
Foundation dimension A	mm	715				950				1185				1420				

Max. filtration pressure: 15 bar overpressure  
Filter plates of pressure-resistant plastic  
Construction data subject to change

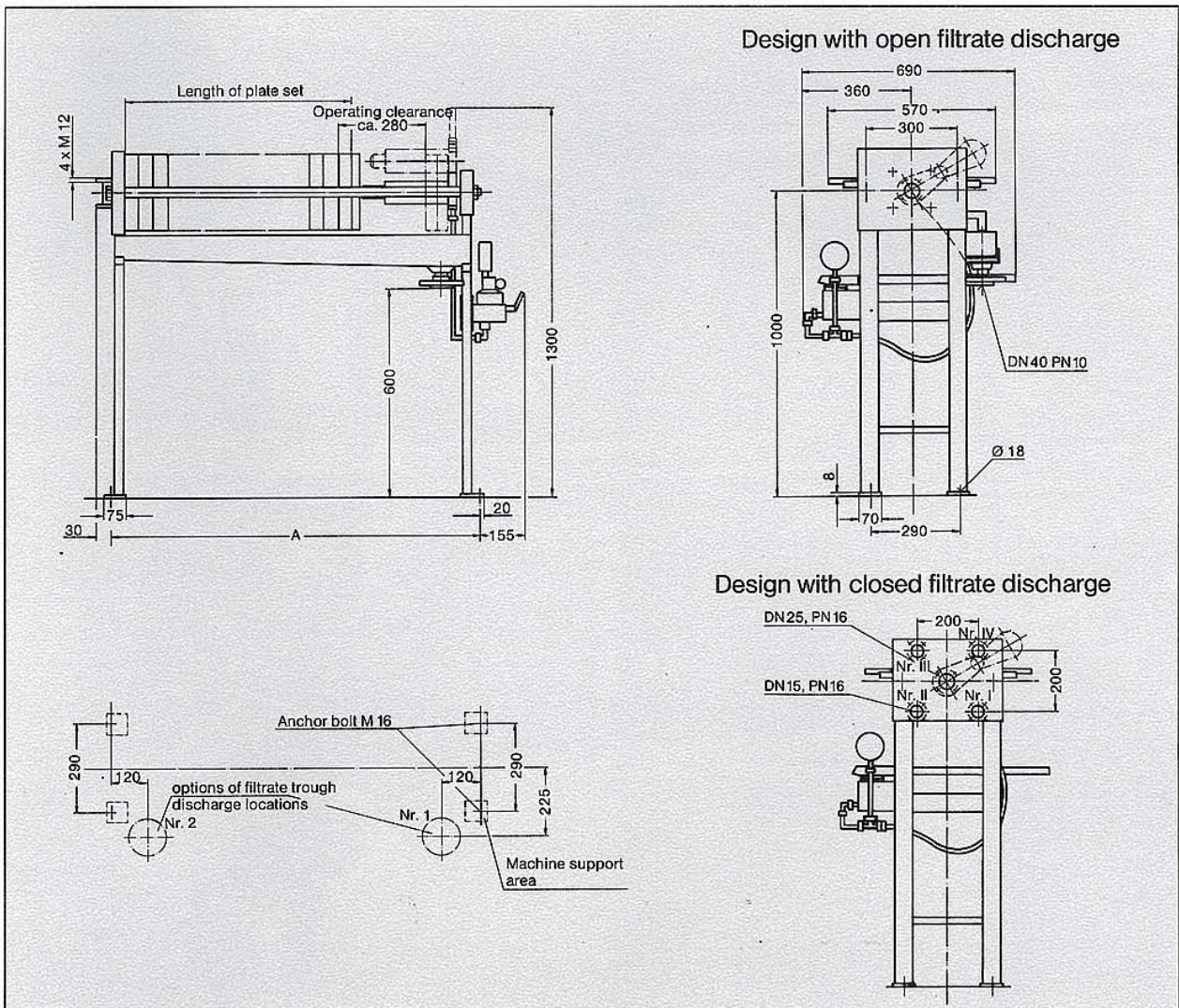


# Technical Data

250 x 250 mm  
Hydraulic closure with hand pump

Size of press		250/5				250/10				250/15				250/20				
Cake thickness	mm	15	20	25	30	15	20	25	30	15	20	25	30	15	20	25	30	
Max. amount of chambers	amount	7	6	5	5	13	11	10	9	19	17	15	14	26	23	20	18	
Filter-area	open filtrate discharge	dm <sup>2</sup>	62	58	52	55	114	106	104	99	167	163	156	154	229	221	208	198
	closed filtrate discharge	dm <sup>2</sup>	48	46	41	45	88	84	82	81	129	129	123	126	177	175	164	162
Filter Volume	open filtrate discharge	dm <sup>3</sup>	4,9	5,4	5,5	7	9,1	9,9	11	9,8	13,3	15,3	16,5	19,6	18,2	20,7	22	25,2
	closed filtrate discharge	dm <sup>3</sup>	3,5	4,2	4,5	5,5	6,5	7,7	9	9,9	9,5	11,9	13,5	15,4	13	16,1	18	19,8
Weight of empty press	kg	160				180				200				220				
Length of plate set	mm	280				515				750				985				
Foundation dimension A	mm	750				985				1220				1455				

Max. closing pressure: 450 bar  
Max. filtration pressure: 15 bar overpressure  
Filter plates of pressure-resistant plastic  
Construction data subject to change



# Netzsch-Chamber Filter Presses will solve your Filtration

## Applications

Solid-Liquid Separation of suspensions of all kinds. The designed high filtration pressure of 15 bar guarantees optimum solids concentration in the filter cake.

## Construction

### Frame (skeleton)

Welded steel construction for maximum strength. Choice of 15 bar maximum filter pressure available. Side rails designed to withstand the operating tension of the press and also to support the weight of the plates. Either fiberglass filtrate trough used for open filtrate discharge, or flange connection for closed filtrate discharge.

### Closing of filter plate set

Mechanic with threaded spindle or hydraulic with hand pump.

## Filter Plate Set

Chamber plates in standard design are fabricated of pressure-resistant and corrosion-proof synthetic. Other materials such as cast iron, ductile iron, aluminium, stainless steel available on request. Filtrate discharge is available either in open design through spigots into a filtrate trough or in closed design through corner ports into discharge pipes.

## Filter Cloths

Push-through filter cloths made of polyamide, polypropylene, polyester, cotton or other materials. On request, drape-over cloths with cloth screw attachment are available.

## Cover illustration:

Netzsch-Chamber Filter Press, size 250 with hand-hydraulic closure.

## Illustration, page 4:

Netzsch-Chamber Filter Press, size 250 in economic design: closure with threaded spindle.

